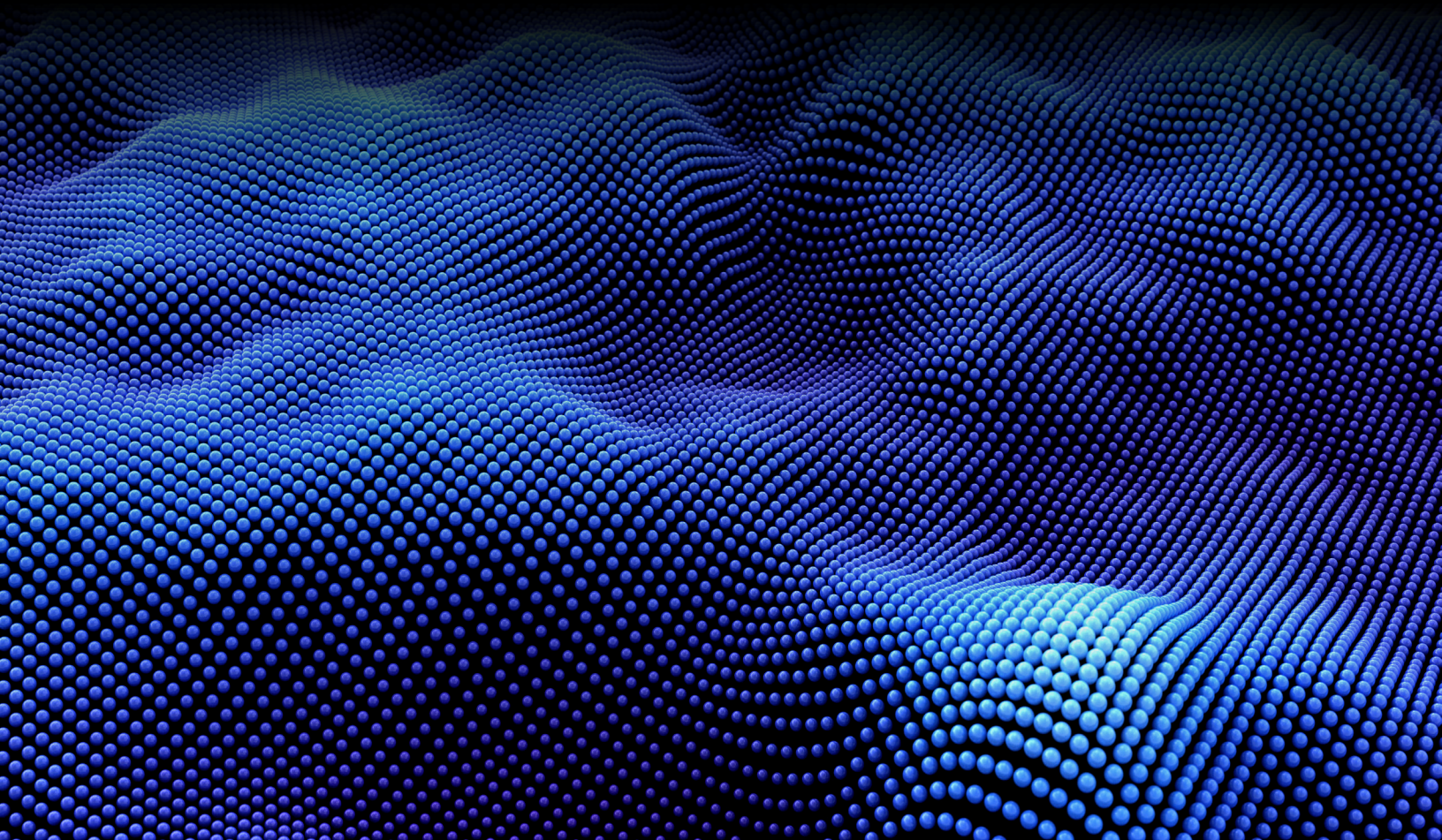




SOLUTION BRIEF

MetalSoft: Agentic infrastructure Operations for Sovereign Private Clouds

The MetalSoft CloudPlex is a integrated IT Operations platform that centralizes on-premises infrastructure orchestration, providing high quality data and safe, deterministic access to equipment for Agentic Infrastructure Operation and self-healing.



High-quality Infrastructure Data and Deterministic tooling are critical for Agentic Operation

Industry Adoption

By 2029, nearly 60% of large enterprises will pivot to consolidated platforms for integrated, intelligent enterprise operations, up from 15% in 2025¹

Nearly all organizations aim to integrate AI into their operations, but fragmented tooling makes this difficult and prone to failure—primarily due to low data quality. Common hurdles include:

- Lack of a centralized System of Record across functions.
- Obsolete data regarding topologies, tenant information, and cabling.
- Non-correlated data across silos.
- Fragmented, vendor-specific tooling and inconsistent data formats.

In contrast, MetalSoft provides AI with accurate infrastructure data by automatically collecting and updating it during discovery, orchestration, and monitoring. By combining this high-fidelity data with safe, deterministic access to equipment, MetalSoft empowers AI agents to perform precise troubleshooting, secure operations, and—ultimately—autonomous operation.

Capability	Description	Strategic Value
Cross-Silo Orchestration	Unified, multi-vendor automation for the full lifecycle of servers, switches, storage, and virtualization.	Eliminates vendor lock-in and ensures consistent deployment across fragmented environments.
System of Record	A high-fidelity source for network topologies, infrastructure state, and user intent, enriched by existing DCIM data.	Provides the "ground truth" necessary for AI agents to make accurate, context-aware decisions.
AI Agent Safeguards	Intelligent monitoring and policy-driven guardrails for autonomous operations.	Enables safe, self-healing infrastructure while maintaining human-in-the-loop oversight.

MetalSoft provides the fundamental safety checks and guardrails essential for mission-critical infrastructure. To prevent downtime and ensure operational integrity, AI agents never interface with hardware directly. Instead, all actions are executed through MetalSoft's deterministic, rigorously tested low-level operations—ensuring that every autonomous action remains safe, predictable, and within policy.

Benefits of using MetalSoft for AI-enabled operations

Accelerated Mean Time to Resolution (MTTR)

Leverage AI-driven correlation to pinpoint root causes in seconds, bypassing hours of manual log analysis.

Eliminate Operational Silos

Unify management of compute, network, and storage through a single, AI-enhanced control plane to remove visibility gaps.

Context-Rich Data Foundations

Fuel your AI agents with high-fidelity, real-time telemetry from every layer of the stack—from physical switches to virtualized environments.

Autonomous Efficiency at Scale

Execute complex, multi-vendor lifecycle tasks with deterministic accuracy, freeing engineers for higher-value architecture.

Policy-Driven Guardrails

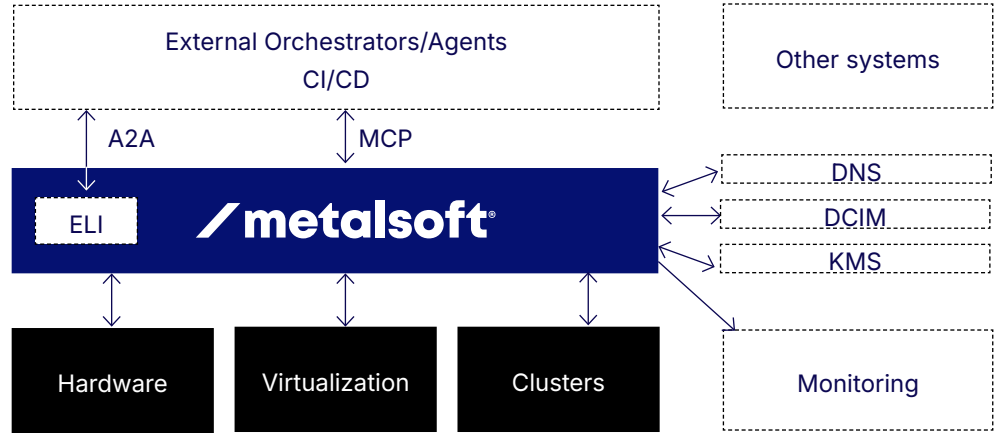
Ensure every autonomous action adheres to strict compliance and safety protocols, maintaining "mission-critical" integrity.

Intelligent infrastructure

ELI, MetalSoft's AI engine supports engineers in troubleshooting and healing infrastructure faster and more reliably than ever.

Operating in a complex enterprise environment

MetalSoft is engineered to thrive within the modern, interconnected enterprise. MetalSoft can coordinate all relevant infrastructure-related operations across the entire stack either alone or in conjunction with other systems of record, other AI agents or CI/CD pipelines.



MetalSoft's MCP tooling delivers deterministic, vendor-agnostic control across internal and external infrastructure. By abstracting hardware and software complexities, our platform provides a safe, reliable foundation that ensures seamless integration with any agentic system.

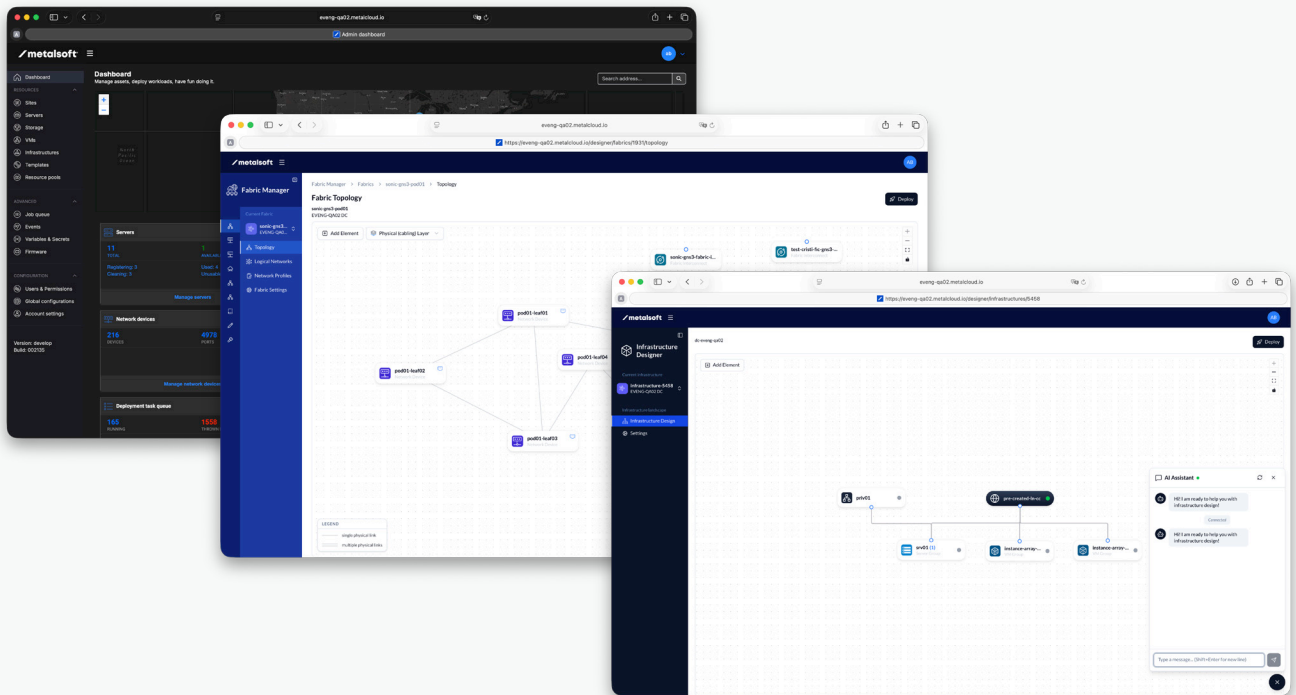
MCP Tool	Description	Strategic Value to an agent
Customer intent	Stores the desired end-state for all infrastructure elements.	Critical: Detects drift and suggests automated fixes.
Inventory data	Provides a real-time, accurate catalog of available hardware and resources.	Optimizes resource allocation for specific use cases.
Topology information	Mapping of physical cabling and high-level logical interconnects.	Visualizes dependencies for rapid troubleshooting.
Log & Event Access	Real-time stream of equipment logs and system events.	Ingests live telemetry to diagnose incidents.
MetalSoft Metadata	Access to server profiles, network policies, and system states.	Performs impact analysis before executing actions.
Live Protocol Data	Direct access to live switch info (LLDP, BGP, etc.).	Provides ground truth for protocol-level repair.

MetalSoft ensures maximum security with full support for on-premises and air-gapped environments. To enable high-performance agentic operations in sovereign or disconnected setups, MetalSoft uses a locally deployed LLM inference service. This service can reside within the MetalSoft cluster or as an external resource.

About MetalSoft Cloud, inc

Founded in 2019, MetalSoft was built by a veteran engineering team with over 15 years of shared experience at a Tier-1 global service provider. Having managed 16 data centers and over 600,000 servers, our founders understood firsthand the friction of fragmented infrastructure.

Our mission is to provide a single, intelligent system to manage the world's on-premises infrastructure. By bringing cloud-like simplicity to the data center, we empower organizations to move beyond manual silos toward fully automated, AI-driven operations.



Evaluate or Purchase MetalSoft. Test drive MetalSoft today or contact us to find out more contact at: sales@metalsoft.io or visit www.metalsoft.io

MetalSoft, Inc 20 N Wacker Dr, 12th Floor Chicago IL 60606 USA, www.metalsoft.io, Copyright © MetalSoft, Inc. All rights reserved. This product is protected by U.S. and international copyright and intellectual property laws. MetalSoft is a registered trademark or trademark of MetalSoft, Inc. and its subsidiaries in the United States and other jurisdictions.

VMware, vSphere are trademarks or registered trademarks of VMware Corporation in the United States, other countries, or both. KUBERNETES® is a registered trademark of the Linux Foundation in the United States and other countries, and is used pursuant to a license from the Linux Foundation. Terraform is a registered trademark of HashiCorp, Inc.